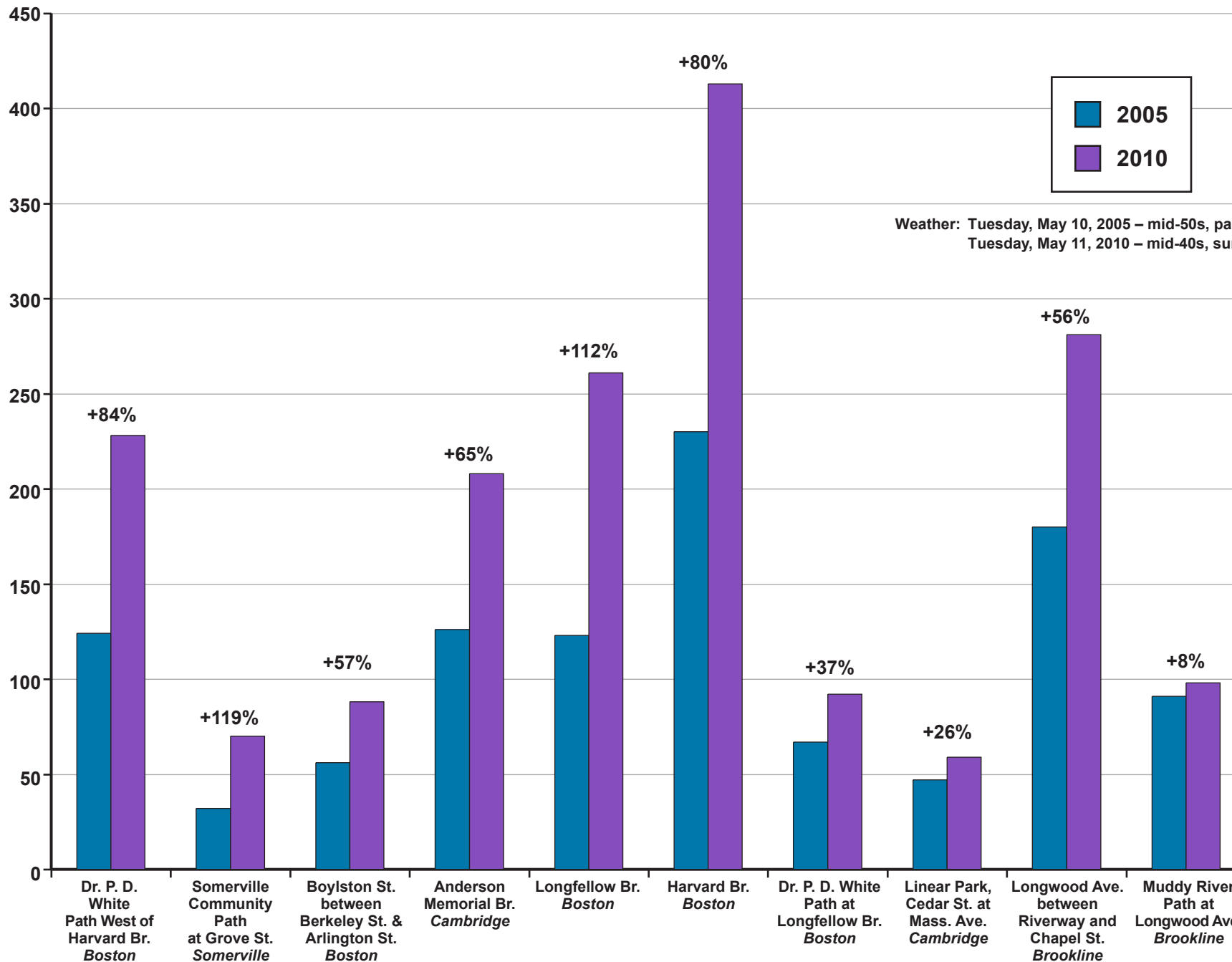
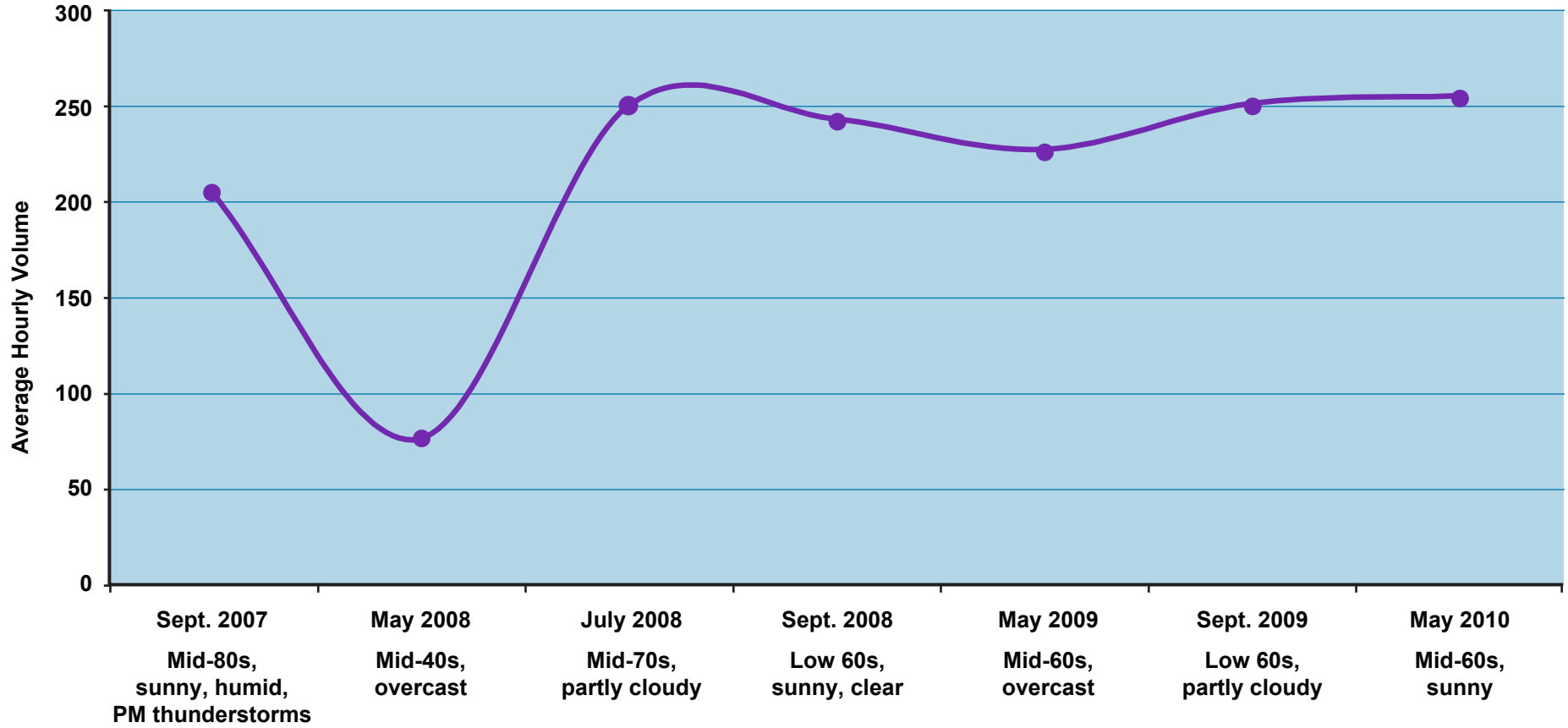


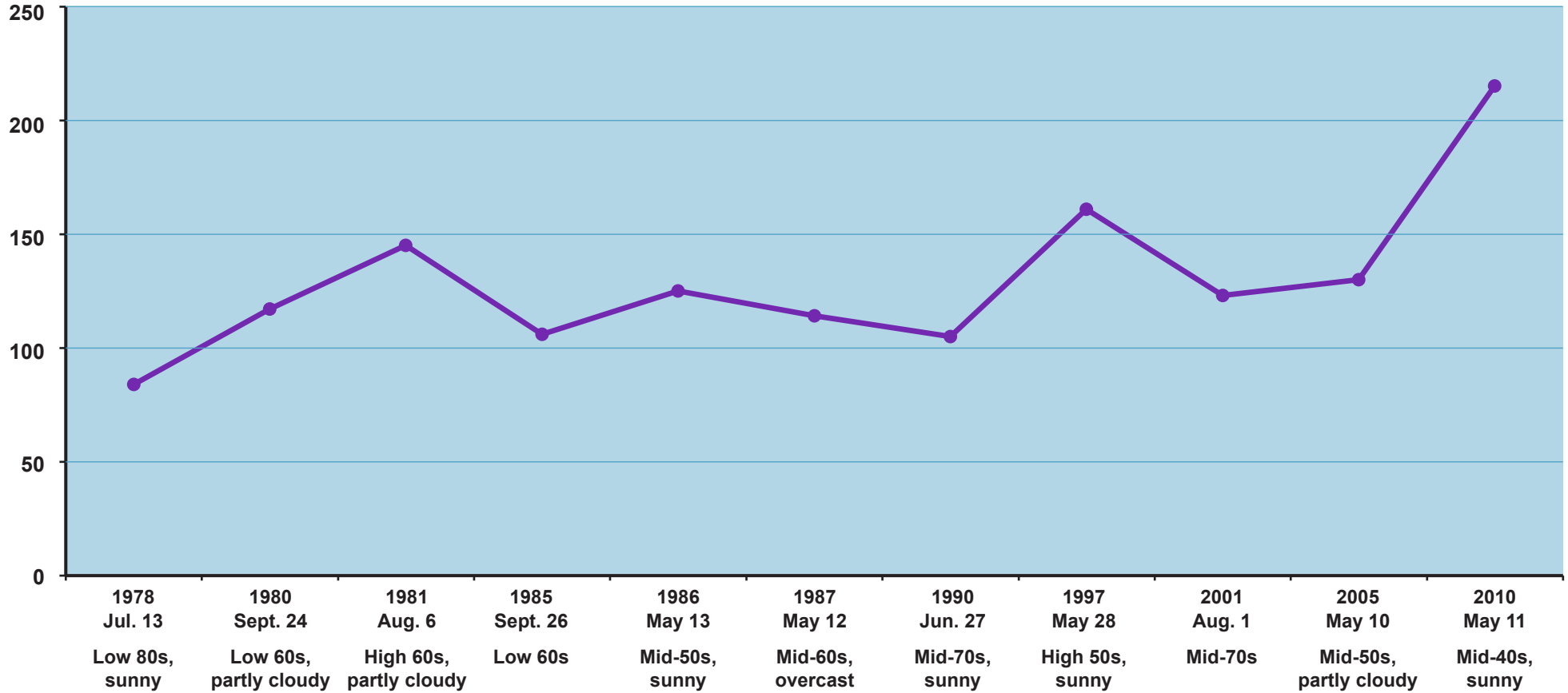
**Bicyclist Volumes at Various Boston Area Locations, 7:00–9:00 AM
2005 vs. 2010, with Percentage Change
Two-Way Segment Counts**



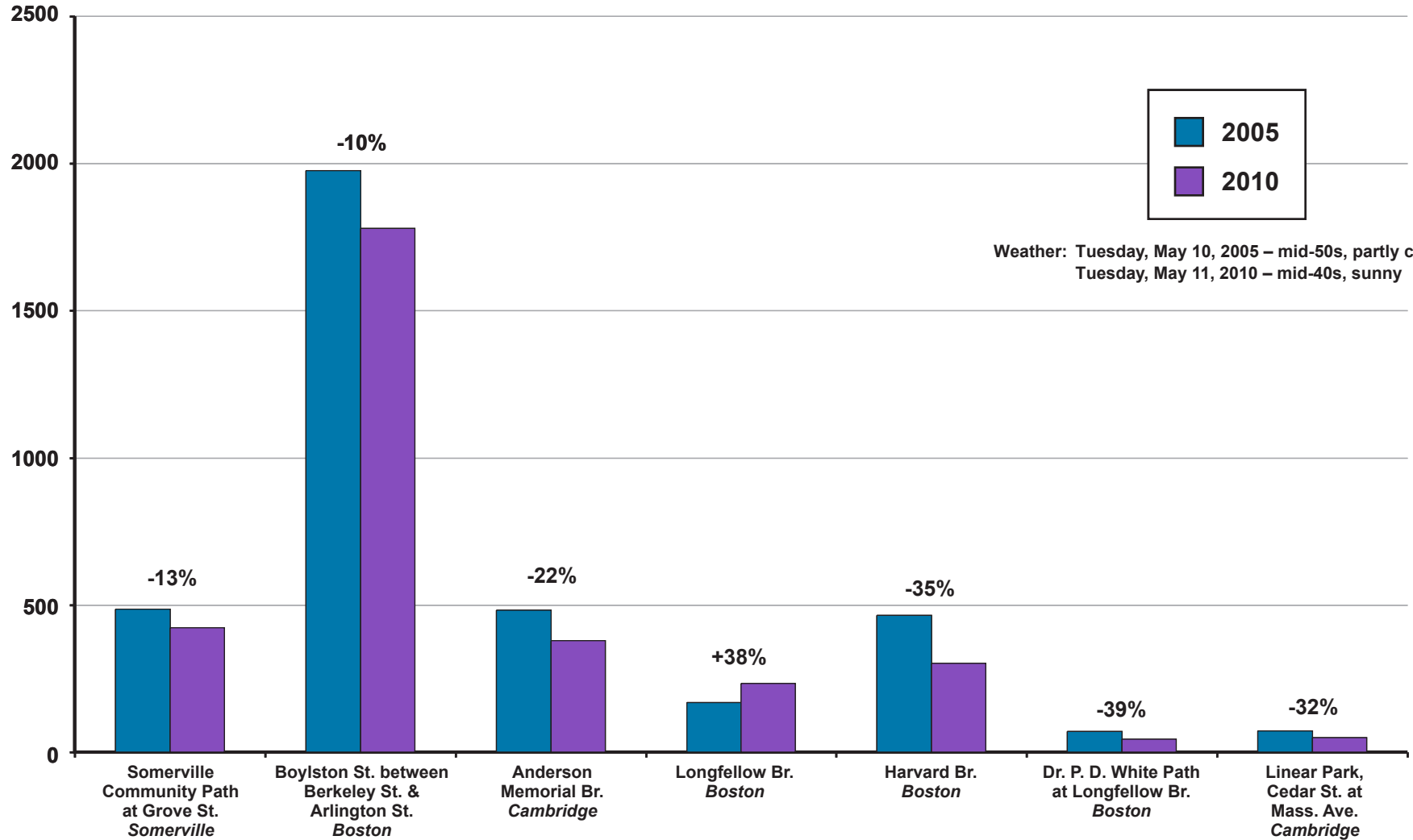
**Hourly Bicyclist Volumes under Various Weather Conditions
Minuteman Commuter Bikeway at Lexington Depot
Saturdays, 7:00 AM–7:00 PM**



**Weekday AM Peak Hour Bicyclist Volumes
Longfellow Bridge, Boston
1978–2010**



**Pedestrian Volumes at Various Boston Area Locations, 7:00–9:00 AM
2005 vs. 2010, with Percentage Change
Two-Way Segment Counts**



Weather: Tuesday, May 10, 2005 – mid-50s, partly cloudy
 Tuesday, May 11, 2010 – mid-40s, sunny