



MAPC AND REGIONAL ECONOMIC DEVELOPMENT

METROPOLITAN PLANNING ORGANIZATION
BOSTON, MASSACHUSETTS

JANUARY 5, 2012



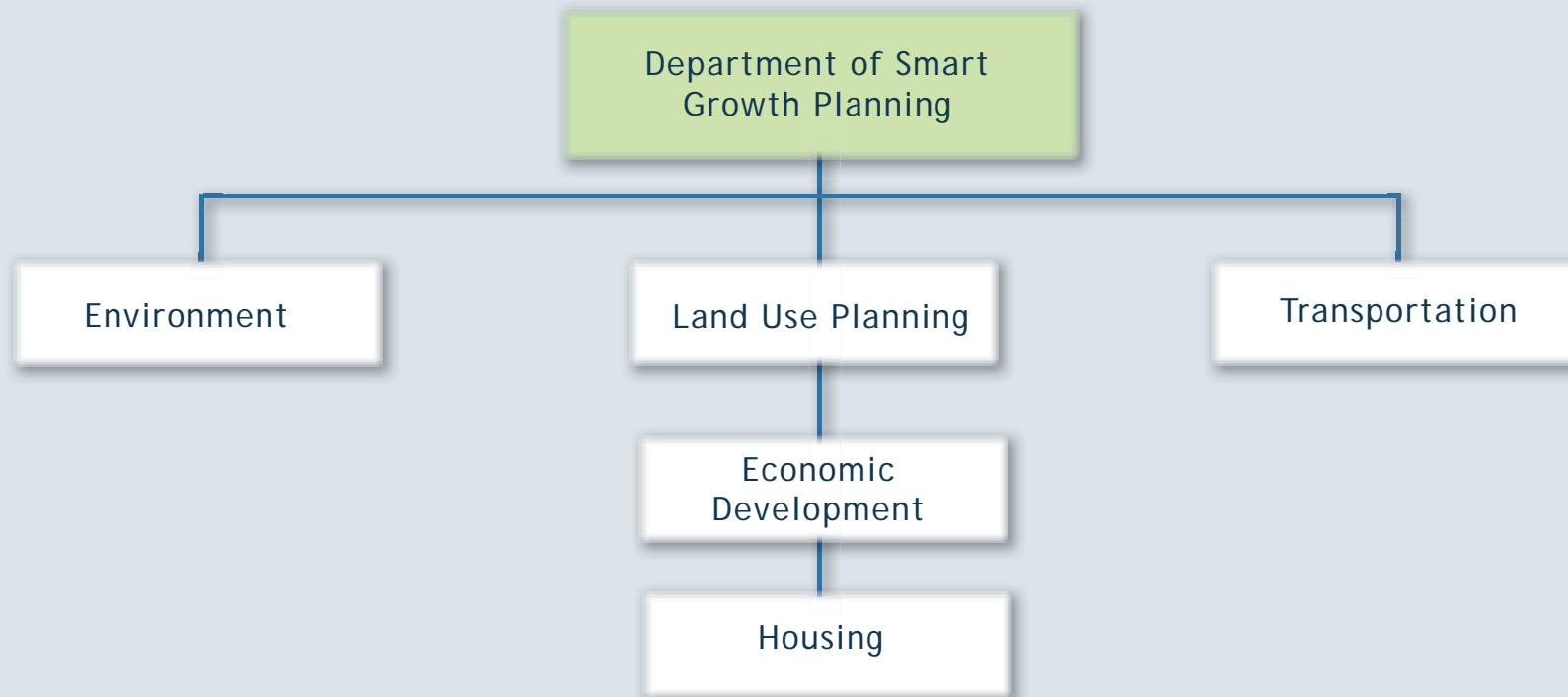
MAPC AND REGIONAL ECONOMIC DEVELOPMENT

ROLE

REGION

PROJECTS

MAPC ECONOMIC DEVELOPMENT DIVISION

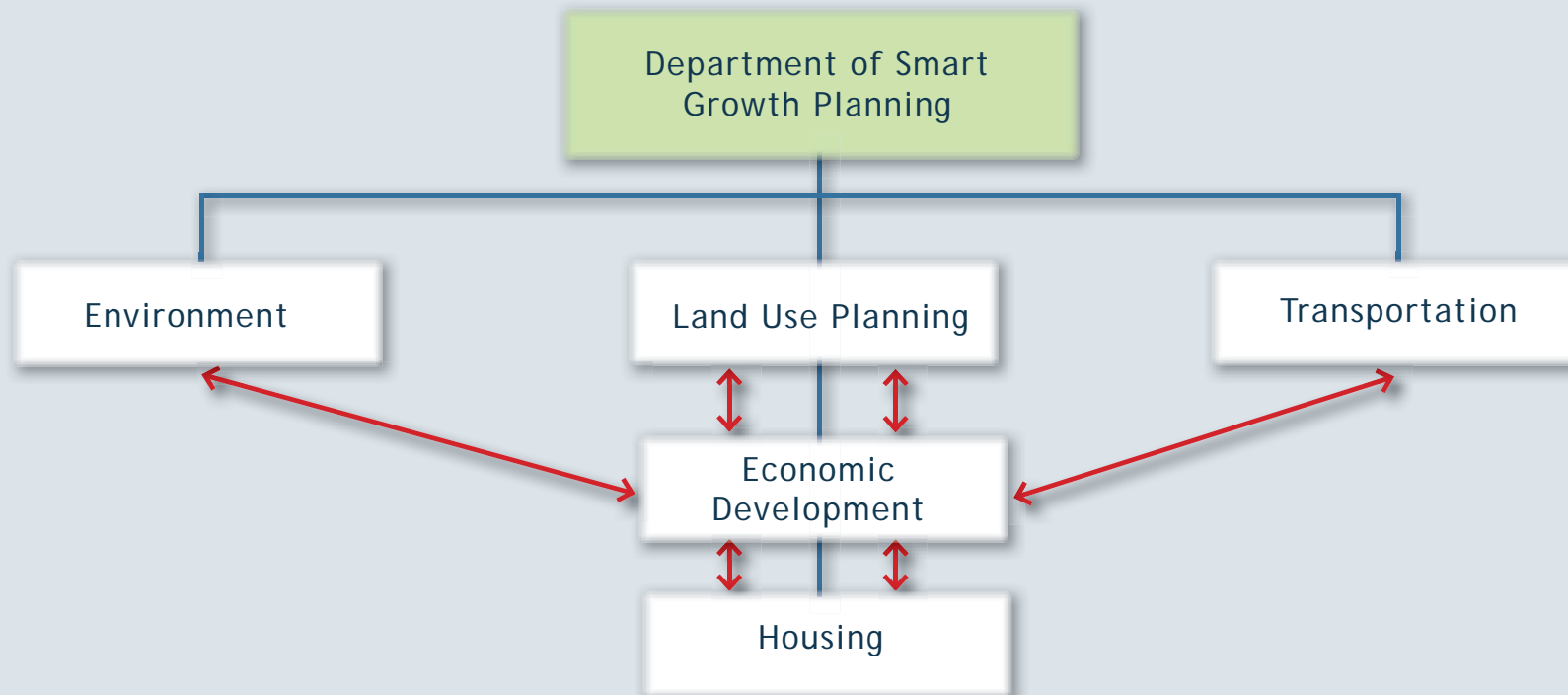


ROLE

REGION

PROJECTS

MAPC ECONOMIC DEVELOPMENT DIVISION



ROLE

REGION

PROJECTS

ECONOMIC DEVELOPMENT DISTRICT



MAPC is the EDA's federally designated Economic Development District

BOSTON REGION EDD

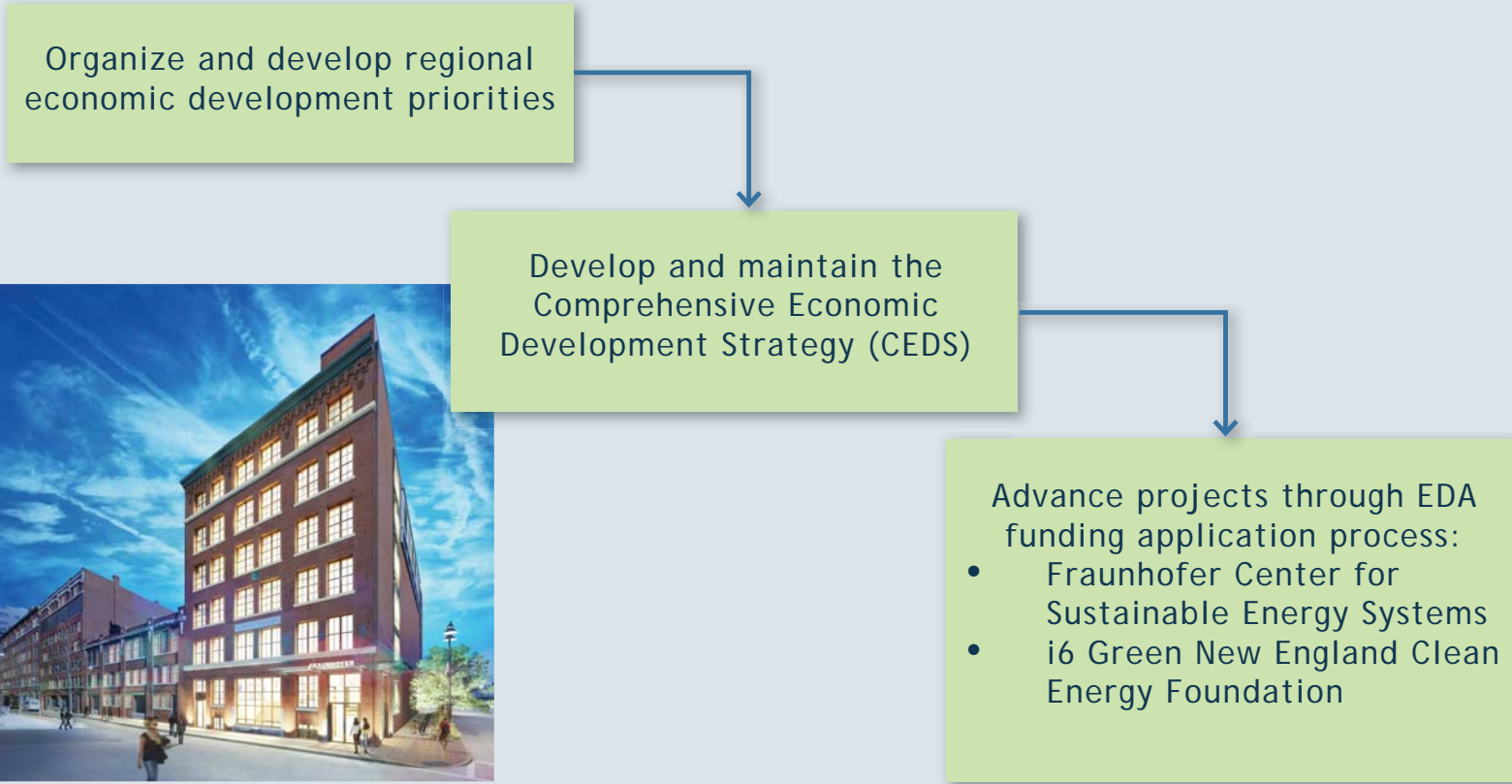


- JOB GENERATION AND RETENTION
- COMMERCIAL/INDUSTRIAL GROWTH
- LOCALLY AND REGIONALLY BASED STRATEGIES

ECONOMIC DEVELOPMENT DISTRICT



MAPC's role as the EDA Economic Development District for the Boston Region:

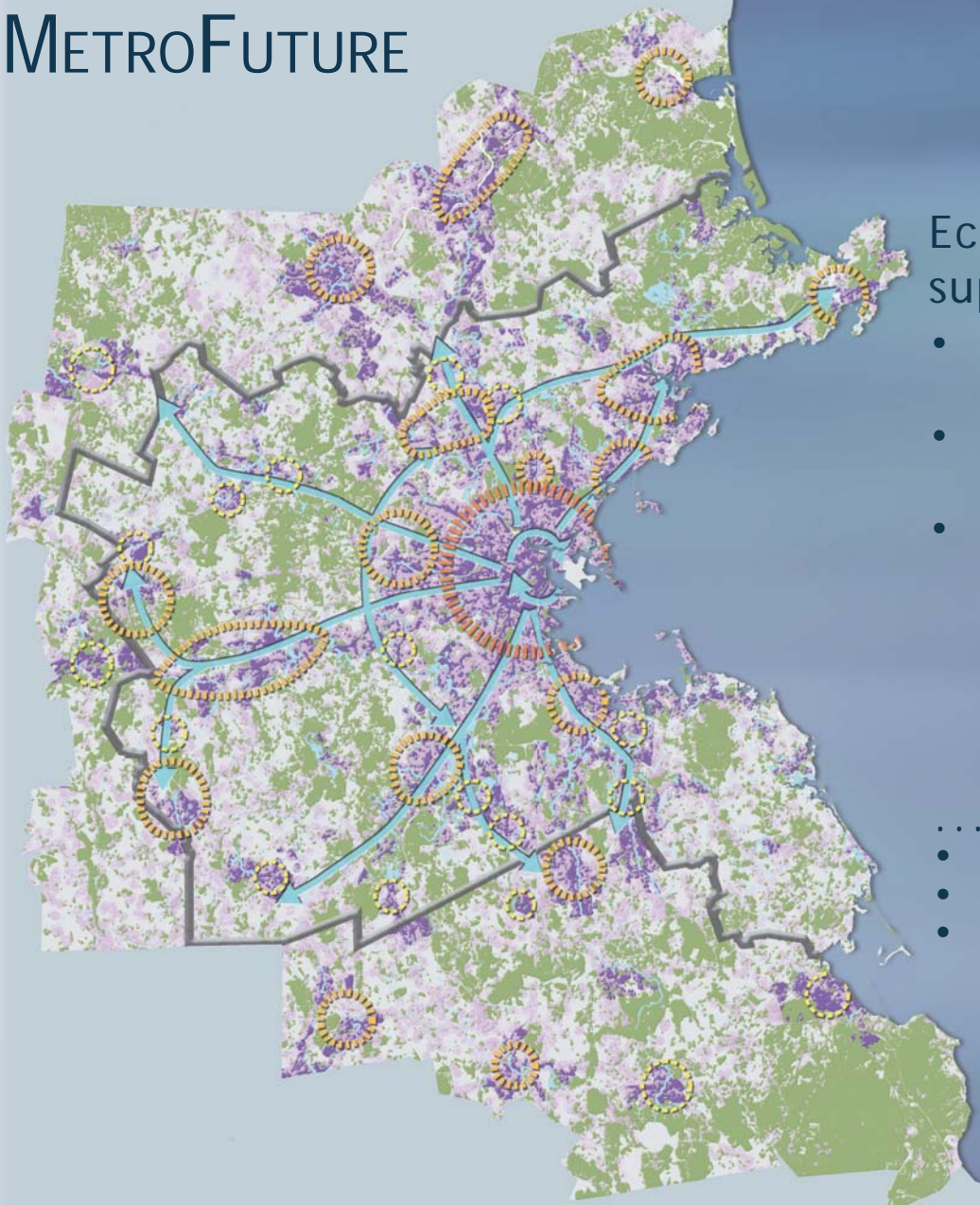


ROLE

REGION

PROJECTS

METROFUTURE



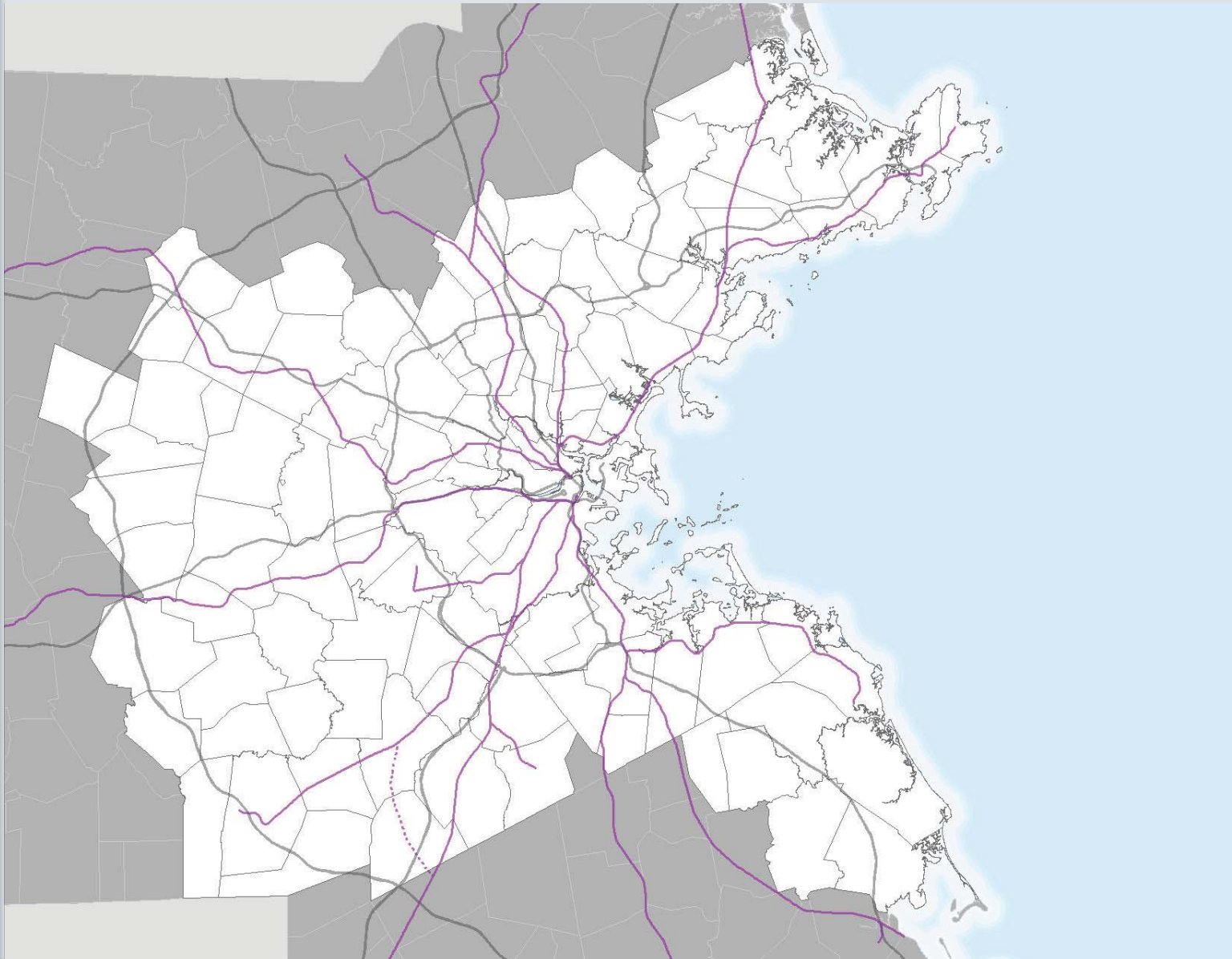
Economic development that supports ...

- Targeted sectors or clusters
GLOUCESTER MARITIME ECONOMY
- Small businesses
DOWNTOWN STOUGHTON
- Minority and immigrant entrepreneurs
LYNN IMMIGRANT ENTREPRENEURSHIP

... in strategic places.

- TRANSIT-ACCESSIBLE
- SERVED BY EXISTING INFRASTRUCTURE
- EXISTING POPULATION AND EMPLOYMENT DENSITY

THE REGION



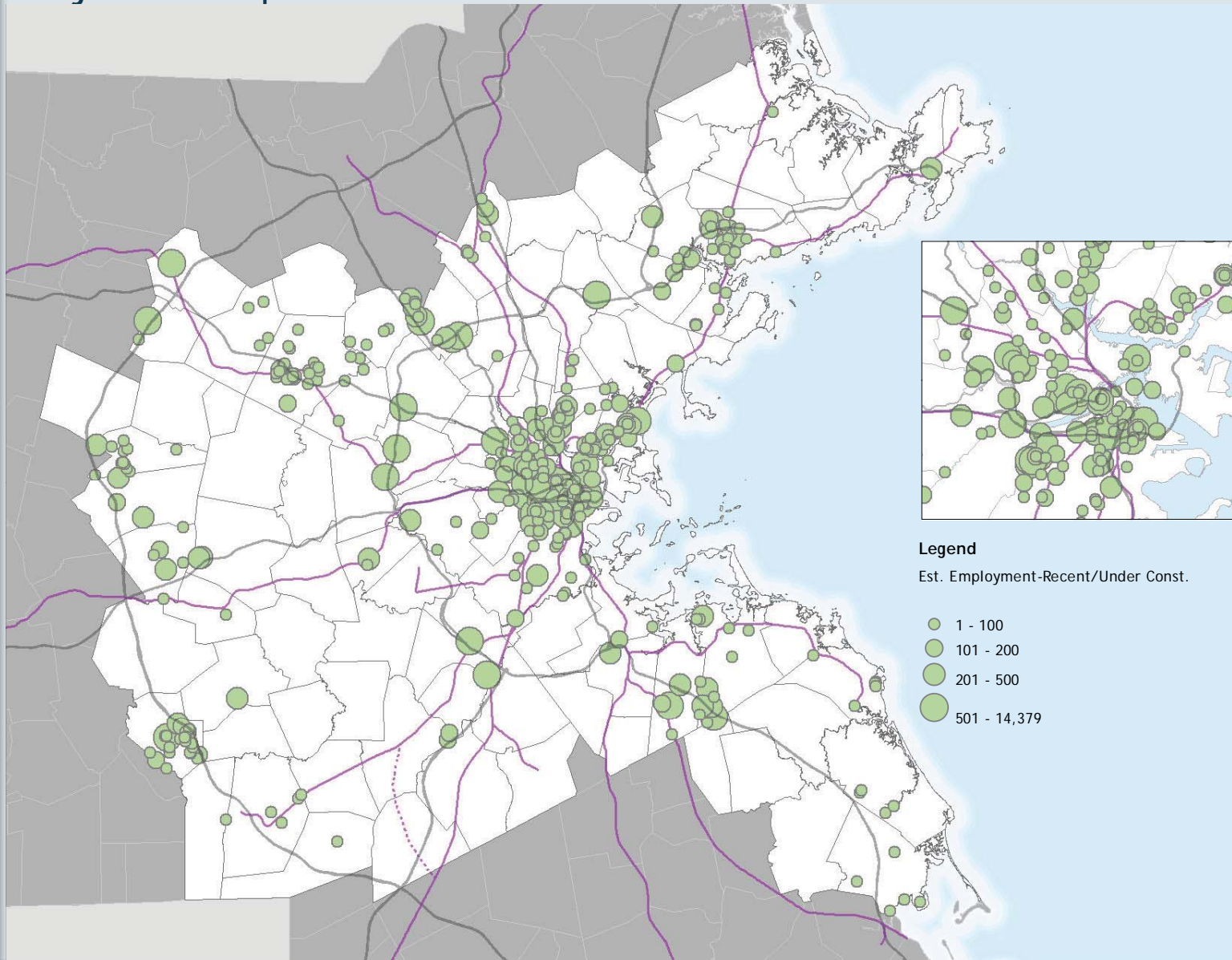
ROLE

REGION

PROJECTS

DEVELOPMENT DATABASE

Projects completed or under construction as of 2010



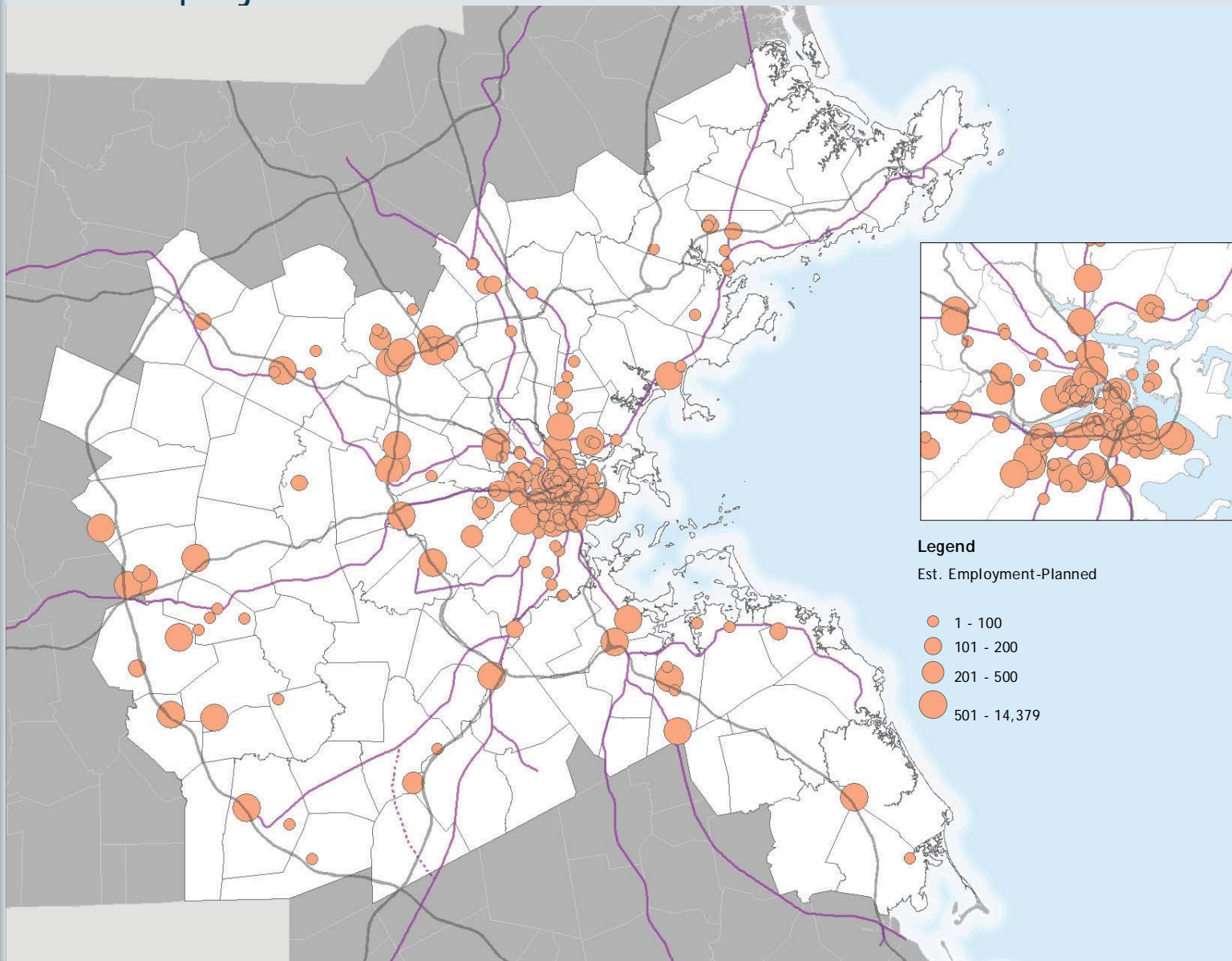
ROLE

REGION

PROJECTS

DEVELOPMENT DATABASE

Planned projects 2010-2035



Legend

Est. Employment-Planned

- 1 - 100
- 101 - 200
- 201 - 500
- 501 - 14,379

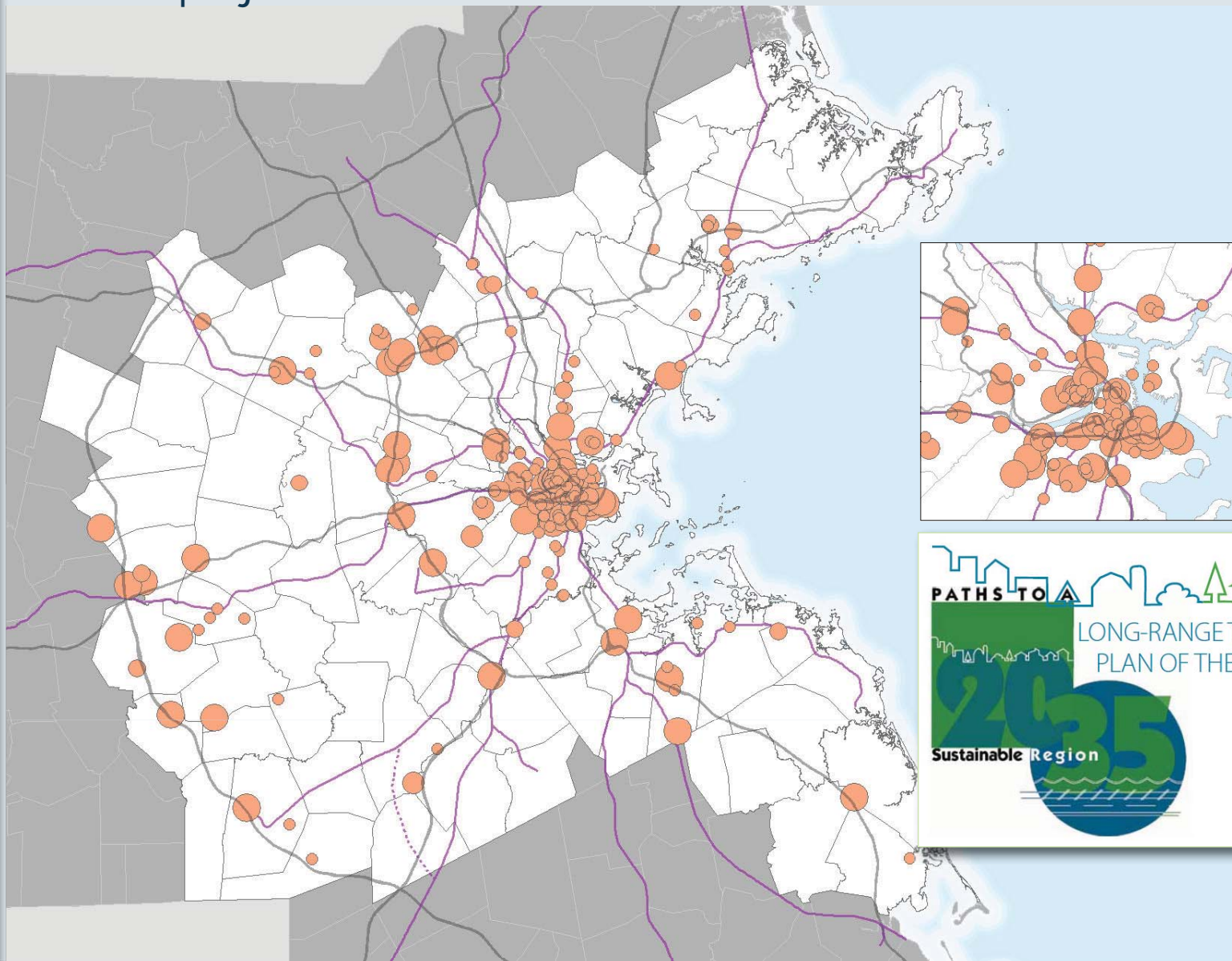
ROLE

REGION

PROJECTS

DEVELOPMENT DATABASE

Planned projects 2010-2035

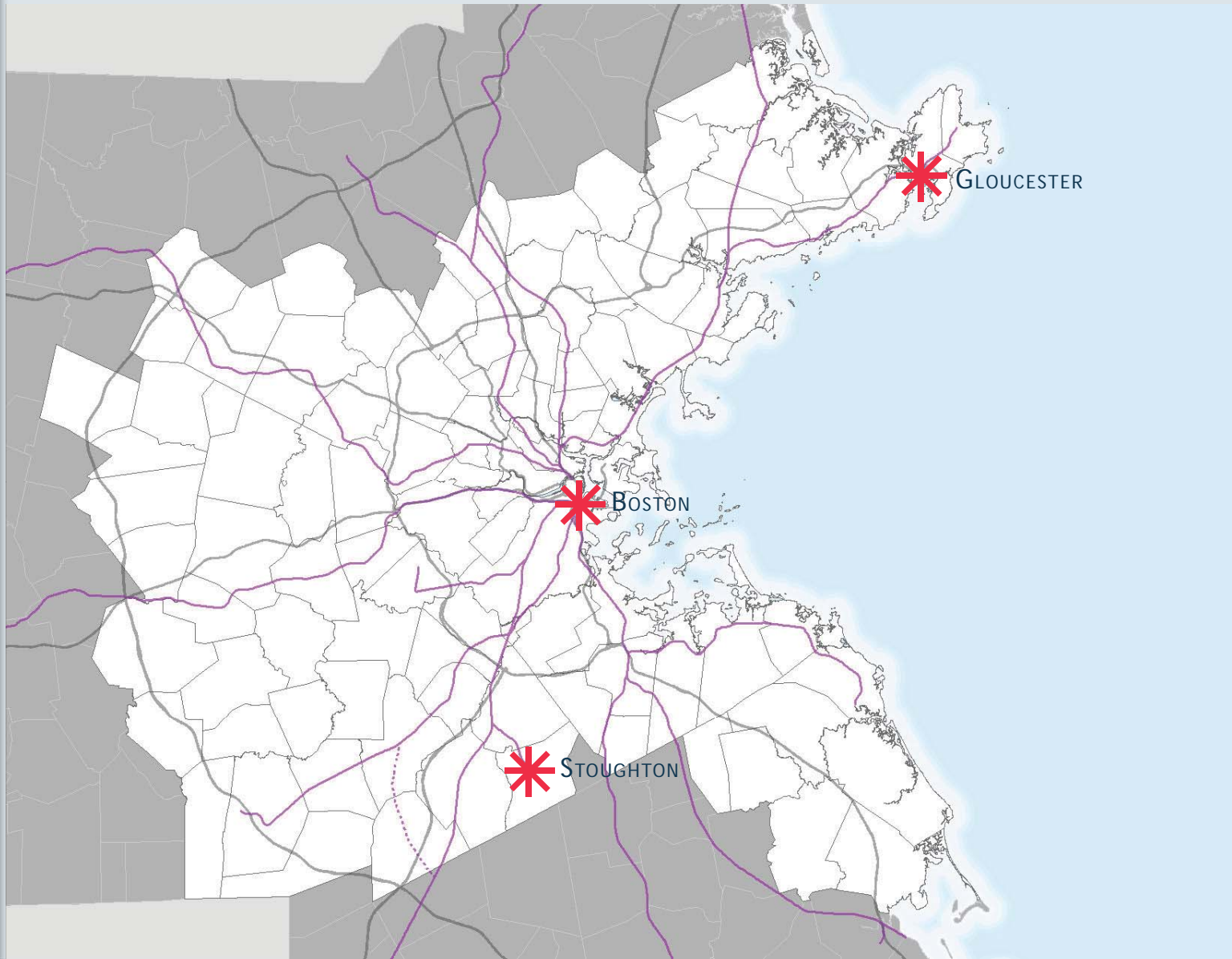


ROLE

REGION

PROJECTS

LOCAL ECONOMIC DEVELOPMENT PROJECTS



ROLE

REGION

PROJECTS

GLOUCESTER ECONOMIC DEVELOPMENT VISIONING AND CLUSTER ANALYSIS



PARTNER/FUNDER

- Economic Development Administration

OBJECTIVE

- Target and strengthen the maritime cluster in Gloucester

OUTCOMES

- Cluster analysis
- Asset identification
- Stakeholder visioning and facilitation
- Continued stakeholder conversation
- Recommendations to increase maritime industry cluster presence in Gloucester



FRAUNHOFER USA CENTER FOR SUSTAINABLE ENERGY SYSTEMS



PARTNER/FUNDER

- Economic Development Administration

OBJECTIVES

- Promote commercialization of sustainable energy technologies and efficient energy systems
- Support Fraunhofer research and development labs

OUTCOMES

- Groundbreaking of Fraunhofer CSE
- Continued MAPC/Fraunhofer partnership to promote clean economic development



DOWNTOWN STOUGHTON MARKET STUDY & IMPLEMENTATION PLAN



PARTNER/FUNDER

- South Coast Rail Corridor Planning Process

OBJECTIVES

- Assess and strategize for downtown revitalization

OUTCOMES

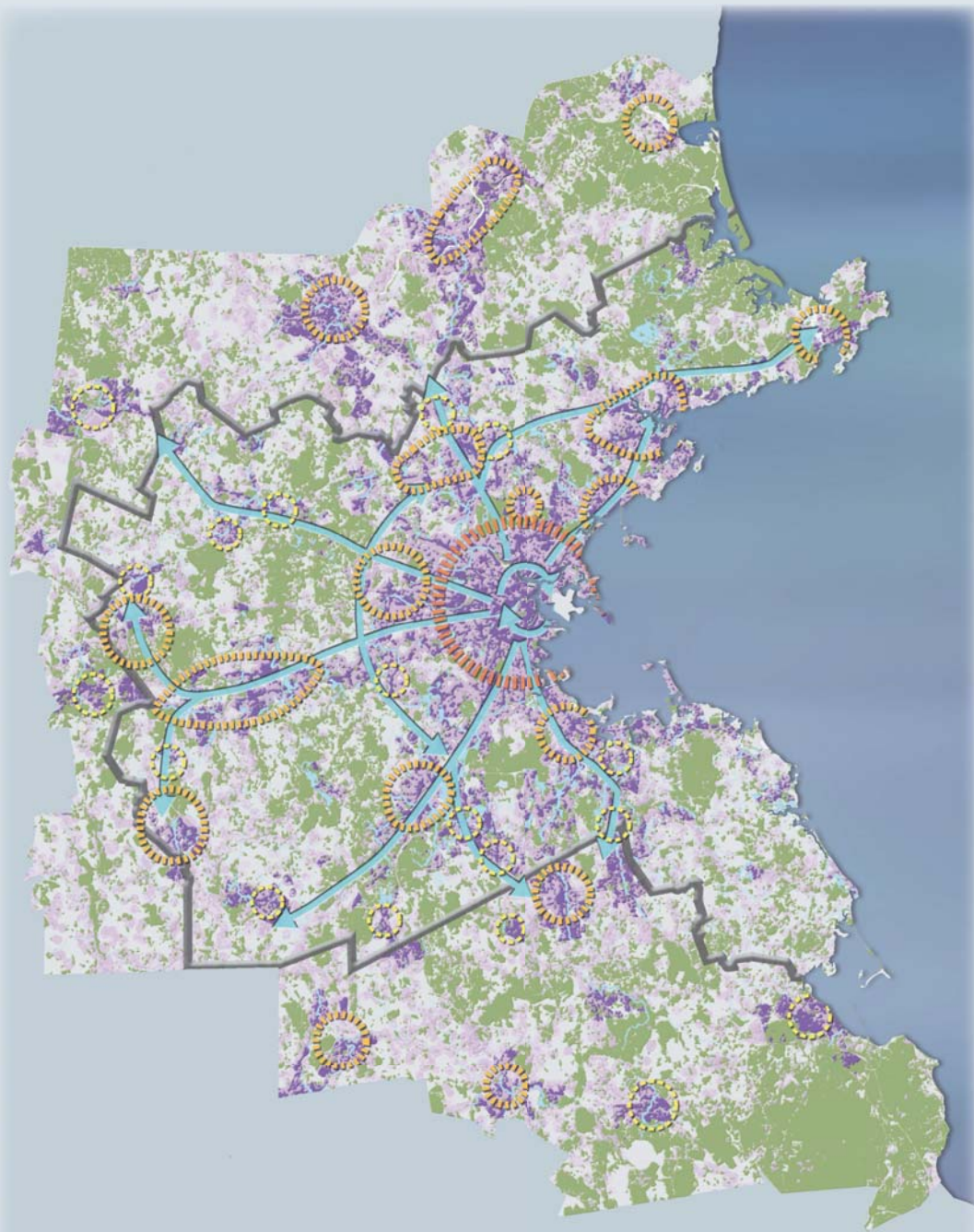
- Retail & housing market study
- Streamlined permitting assessment
- Business organization





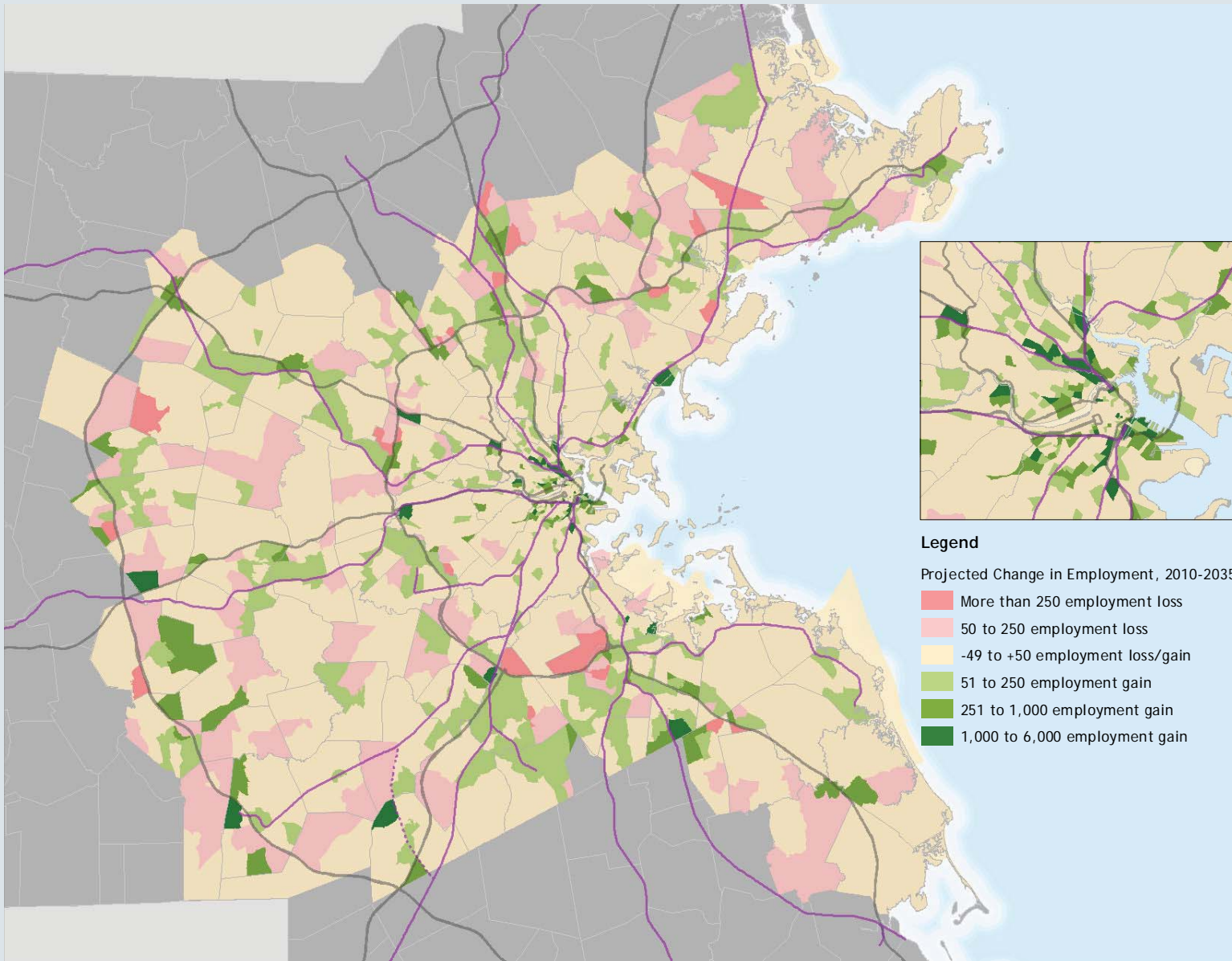
THANK YOU!

QUESTIONS AND ANSWERS



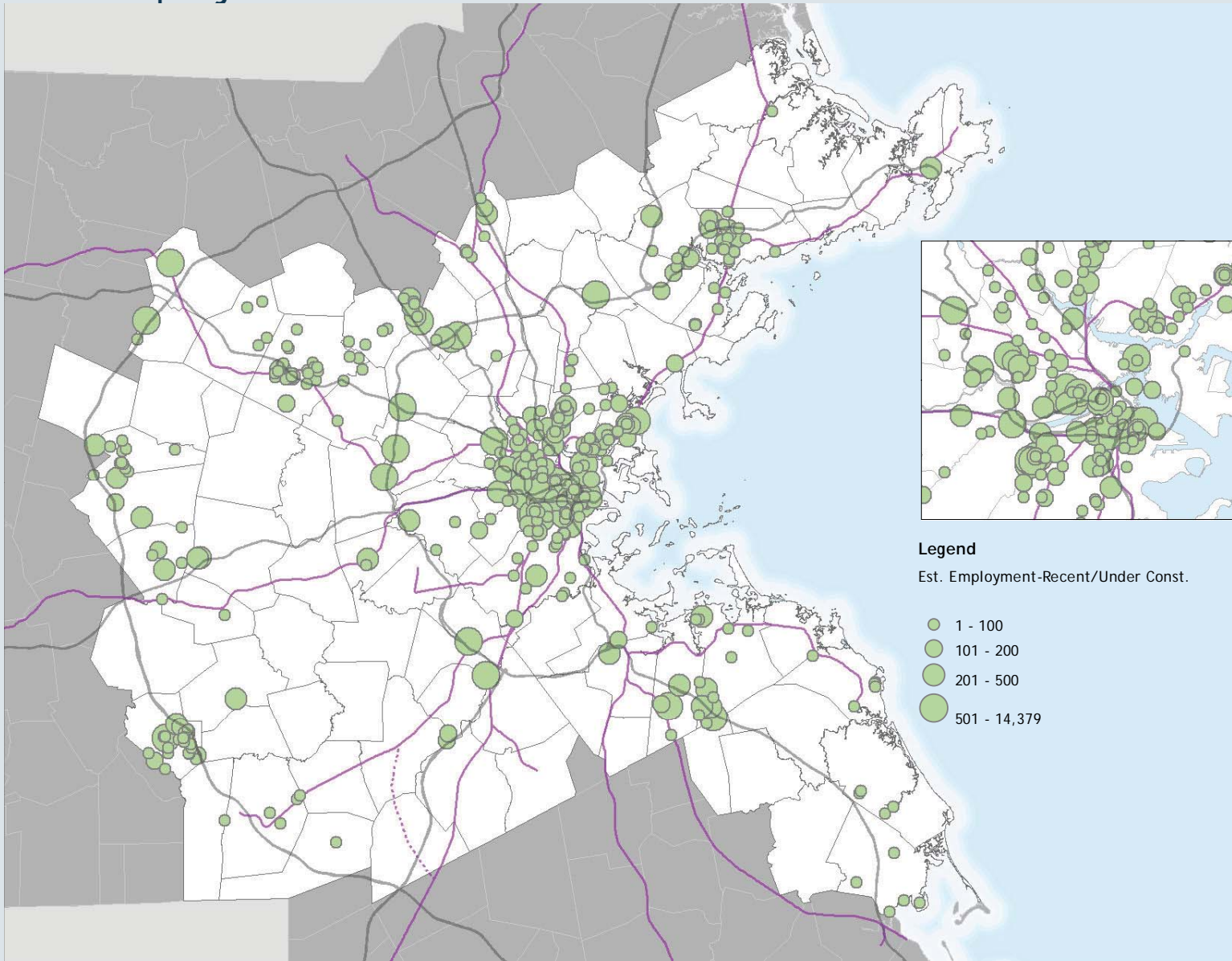


METROFUTURE PROJECTIONS



DEVELOPMENT DATABASE

Recent projects/under construction



DEVELOPMENT DATABASE

Planned projects

